



How to Replace TRS/LG1 race rear hub bearings

Written By: The Hive - Jeremy



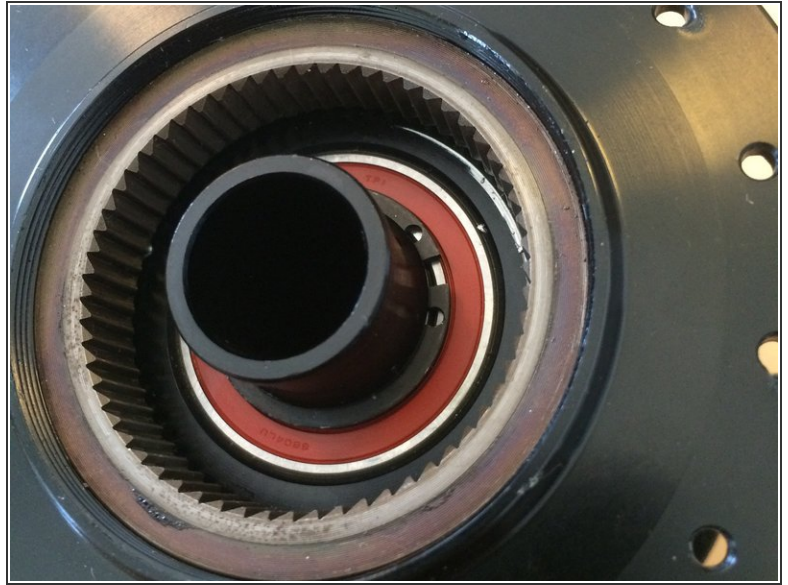
**TOOLS:**

- [e*thirteen bearing press tool](#) (1)
- [External C-clip pliers](#) (1)

**PARTS:**

- [6804 e*thirteen replacment bearing](#) (1)
- [6902 e*thirteen replacment bearing](#) (1)

Step 1 — How to Replace TRS/LG1 race rear hub bearings



- Remove the axle and freehub body using this guide: [Generation 2 axle - TRSr/TRS+/LG1+ rear hub axle install and removal](#)
 - You should just have the hub shell, bearing spacer and bearings left to remove
- ⚠ Some hubs use a C-clip to retain the driveside bearing. If you hub uses this clip, use external C-clip pliers to remove it.

Step 2



- Using the e*13 bearing service tool, place the axle press tool on the drive side axle
- Place the bearing removal cup on the disc side
- Slide the threaded rod through the hub, install the handles
- Make sure the axle press tool and bearing removal cup are centered
- Tighten the tool handles to press the axle and the disc side bearing out of the hub shell

Step 3



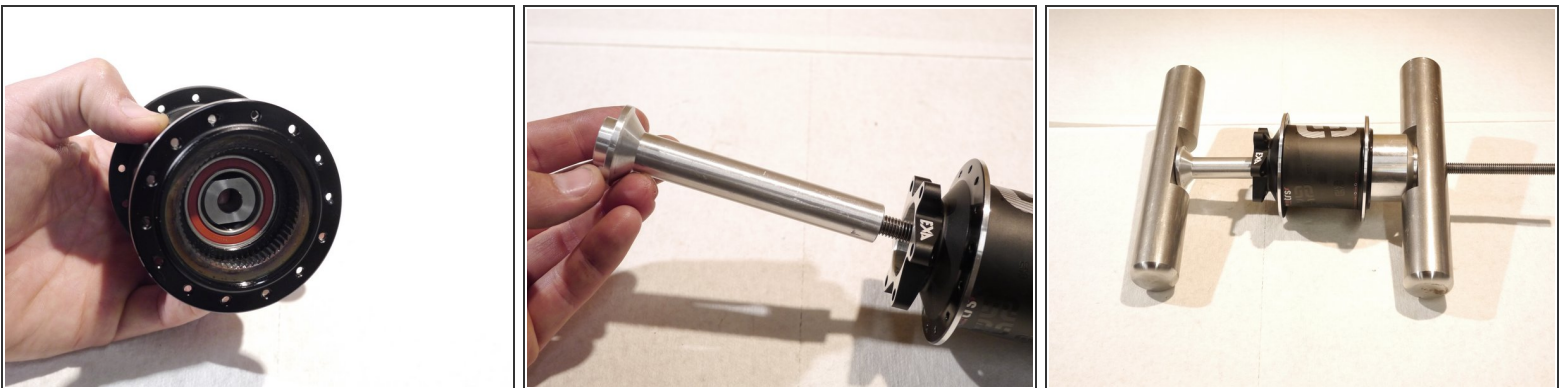
- Remove the axle and bearing from the hub shell

Step 4



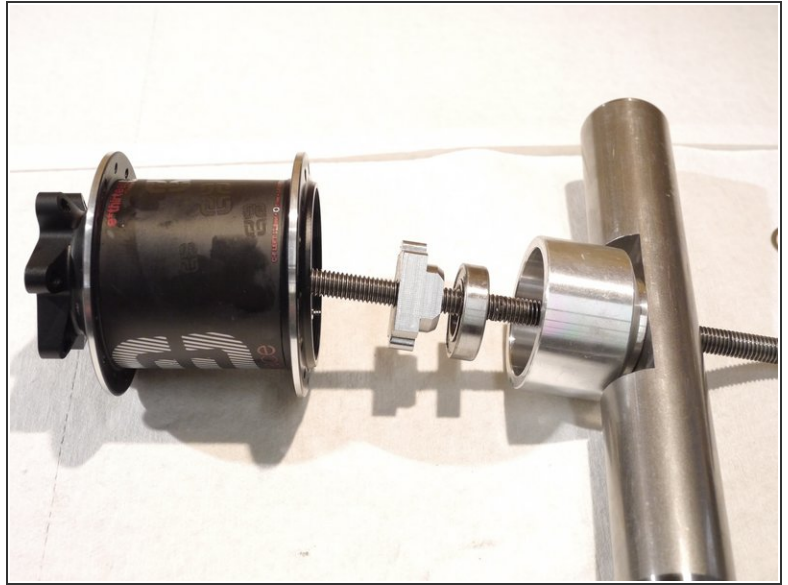
- Look inside the hub shell, you will see two cut outs in the bearing stop for the drive side bearing
- insert the bearing removal tool into the hub from the disc side and insert it into the drive side bearing
- Make sure the wings on the tool are in the cut outs. This will press the bearing out by its outer race

Step 5



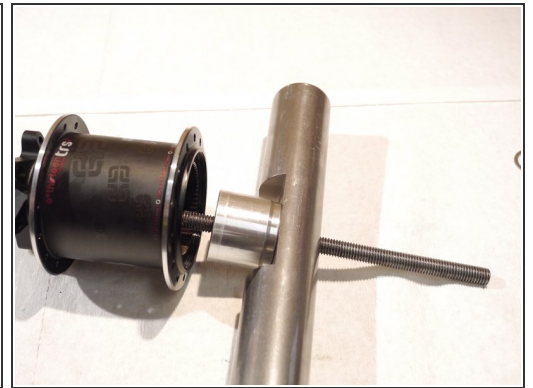
- Slide the threaded rod through the hub and the removal tool
- Slide the press rod over the threaded rod and onto the removal tool
- Place the removal cup on the drive side and install the handles
- Tighten the tool
- The press rod will press on the removal tool and push the bearing out of the hub shell

Step 6



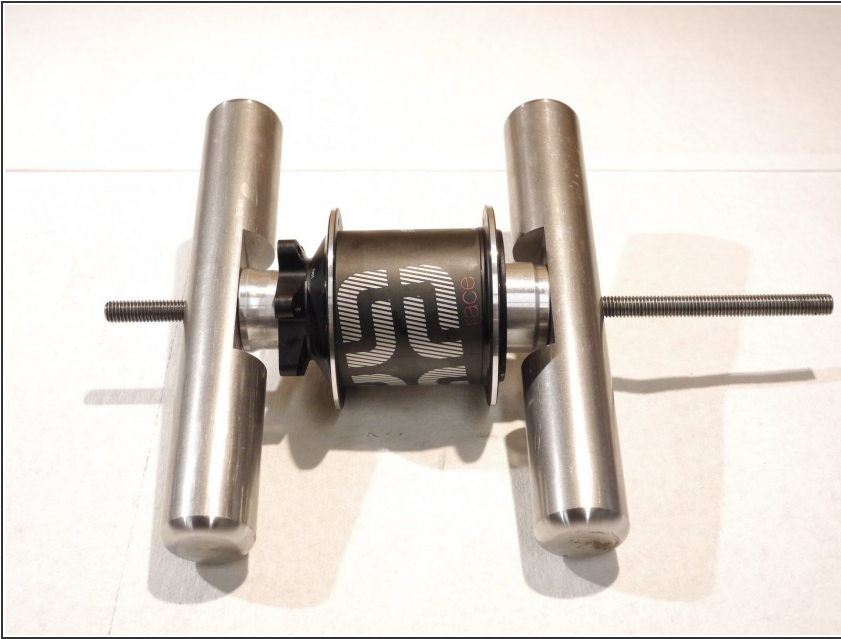
- Remove the bearing from the hub shell

Step 7



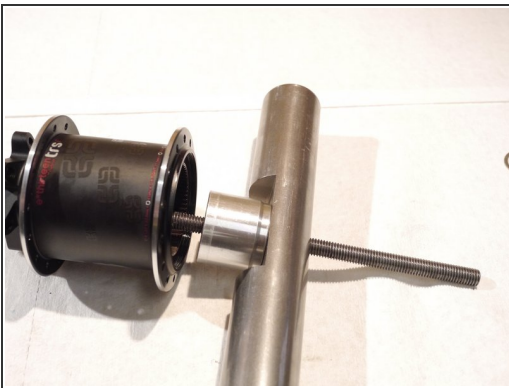
- To install bearings, start by installing the disc side bearing
- Slide the bearing over the bearing press tool
- ⓘ e*13 original replacement bearings should be installed with the red seal facing out
- Slide the other bearing press tool into the drive side bearing bore

Step 8



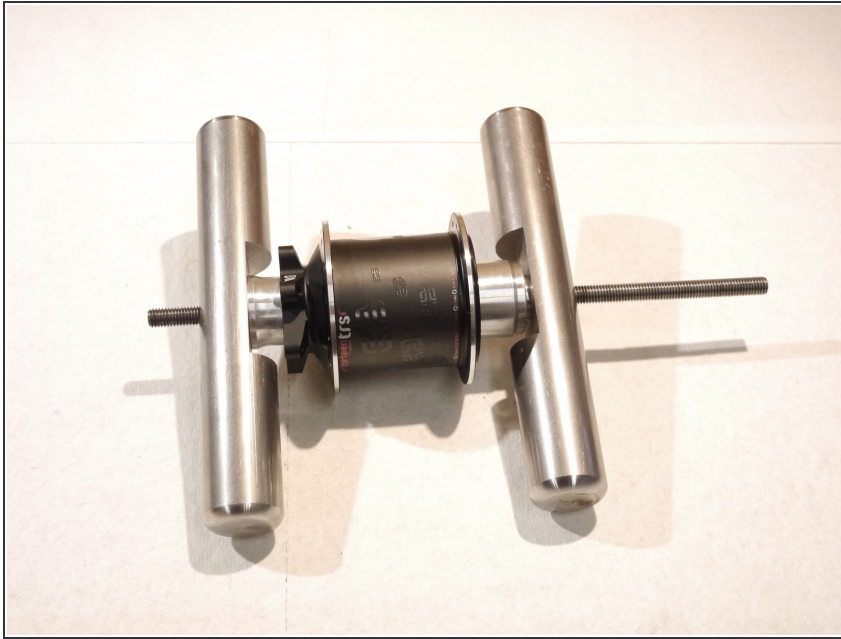
- Tighten the tool handles to press the bearings in
- Be sure the bearing presses in straight

Step 9



- Leave the disc side bearing tool in place and remove the drive side too
- Slide the bearing spacer over the threaded rod and into the hub shell (tool removed in photo for clarity)
- Slide the bearing over the end of the bearing spacer
 - ❗ e*13 original replacement bearings should be installed with the red seal facing out
- Place the bearing tool on the drive side over the bearing

Step 10



- Put the handle back on the rod and tighten the tool to press the drive side bearing in, capturing the axle between the bearings
- Check the bearings to be sure they are pressed in fully and spinning smoothly, you can now reinstall the the axle: [Generation 2 axle - TRSr/TRS+/LG1+ rear hub axle install and removal](#)

Thanks for reading, now get out there and ride!