



How to Replace Gen 1 LG1 guide plastics

Removal and install of LG1, LG1+ and LG1r guide plastics

Written By: The Hive - Jeremy

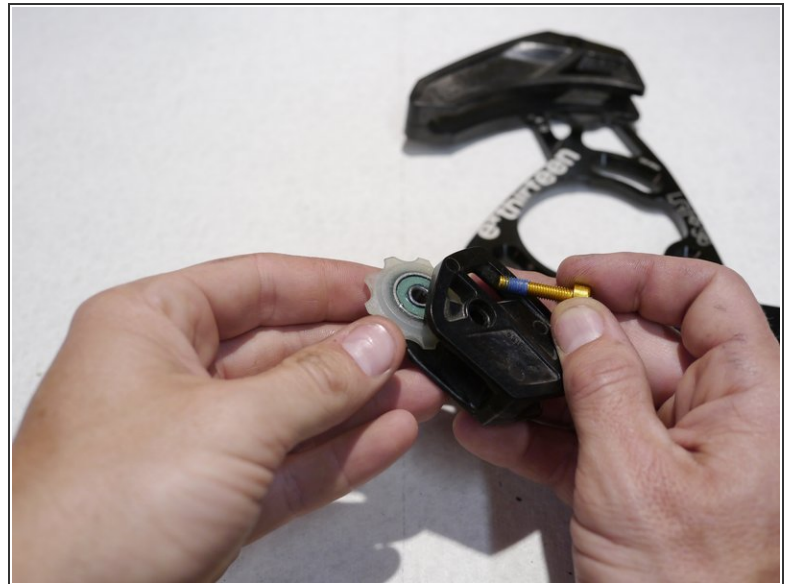


Step 1 — How to Replace Gen 1 LG1 guide plastics



- Remove upper slider fixing bolt
- Pull the front of the slider out to release it from the back plate

Step 2



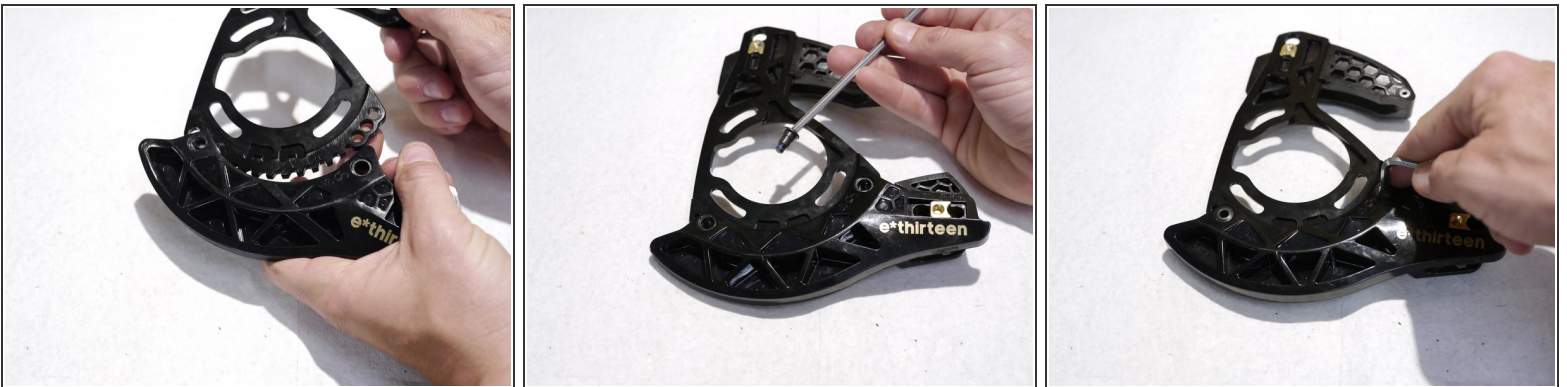
- Remove the lower slider fixing bolt, this will release the lower slider
- Remove the bolt from the slider, this will release the roller

Step 3



- To remove the direct mount bashguard, remove the fixing bolts from the back of the guide
- The direct mount bashguard is keyed into the back plate, to remove the direct mount bashguard pull firmly on the back of the bashguard

Step 4



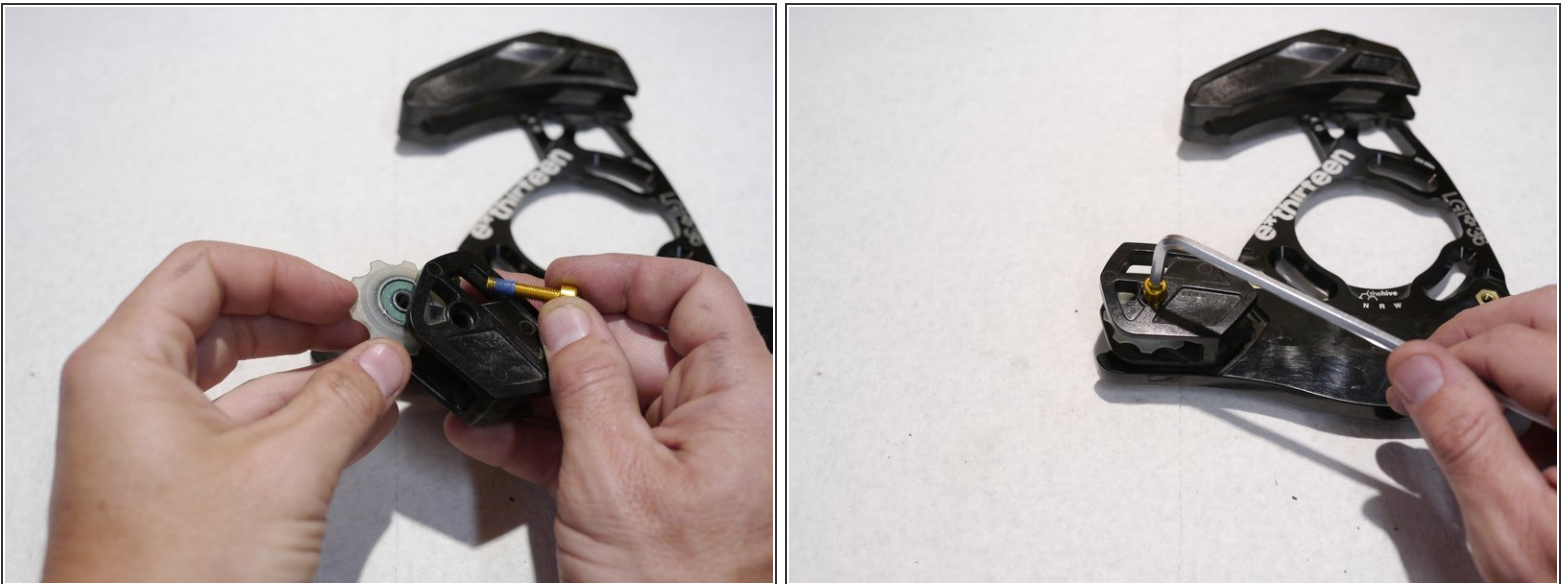
- To replace the bashguard, press firmly to seat it. Note the different positions for narrow, regular and wide positions
- reinstall the lower roller and slider, note the positions for different chainring sizes
- Torque the lower slider fixing bolt to 0.5nm or just past snug, be careful not to over-tighten

Step 5



- To replace the upper slider, insert the slider into the keyway
- Line up the nut with the bolt hole and click the head of the nut into the slider
- Tighten the nut to 0.5nm or just past snug. Do not over tighten as this can damage the slider

Step 6



- Assemble the lower slider
- Align the lower slider nut with the bolt
- Tighten the nut to 0.5nm or just past snug. Do not over tighten as this can damage the slider

Thanks for reading, now get out there and ride!