



Generation 2 axle - TRSr/TRS+/LG1+ rear hub axle install and removal

How to remove and install TRSr, TRS+ and LG1+ rear hub axles

Written By: The Hive - Jeremy



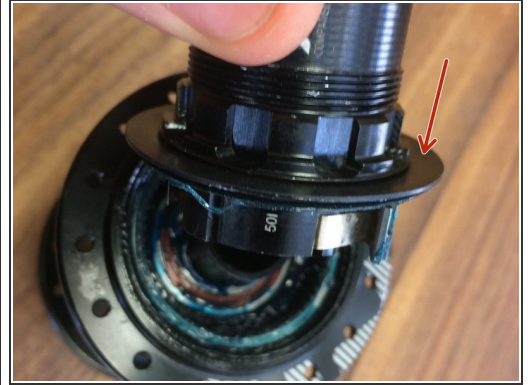
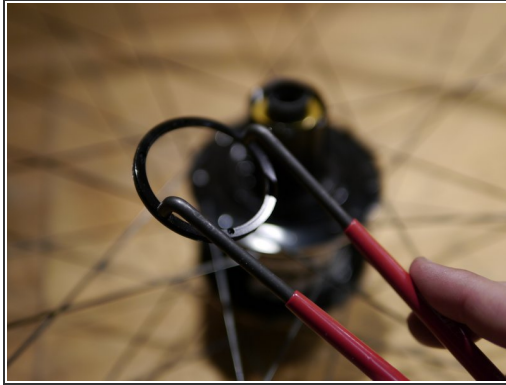
**TOOLS:**

- [3mm hex wrench](#) (1)
- [Pin spanner](#) (1)

**PARTS:**

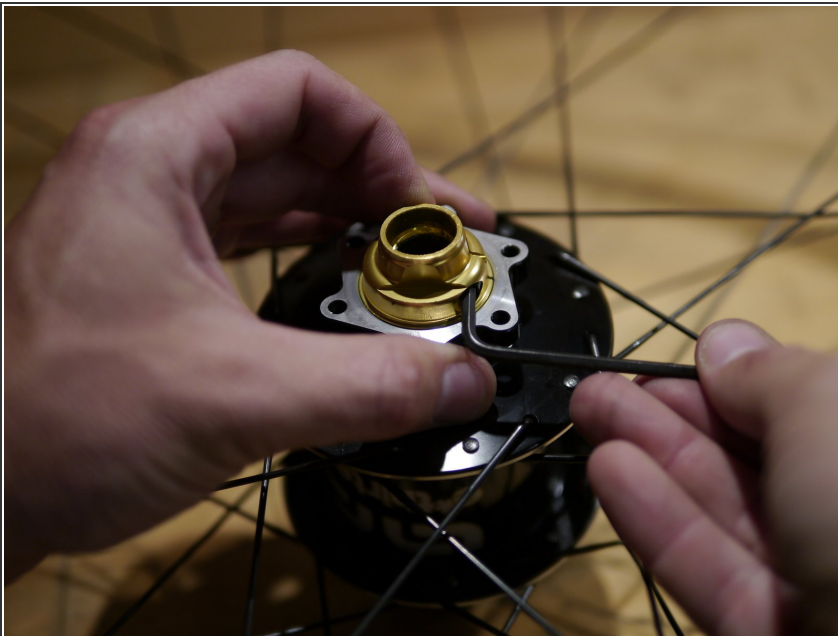
- [grease](#) (1)
- [Dumond Tech freehub oil](#) (1)

Step 1 — Generation 2 axle - TRSr/TRS+/LG1+ rear hub axle install and removal



- Remove the Freehub lockring
- 2016+ hubs and freehubs use a one piece seal and no lockring, so skip this step if you don't see the lockring

Step 2



- Loosen the 3mm hex endcap screw, by turning counterclockwise

Step 3



- Loosen the non-drive side endcap by turning it clockwise.
- Remove the non-drive endcap

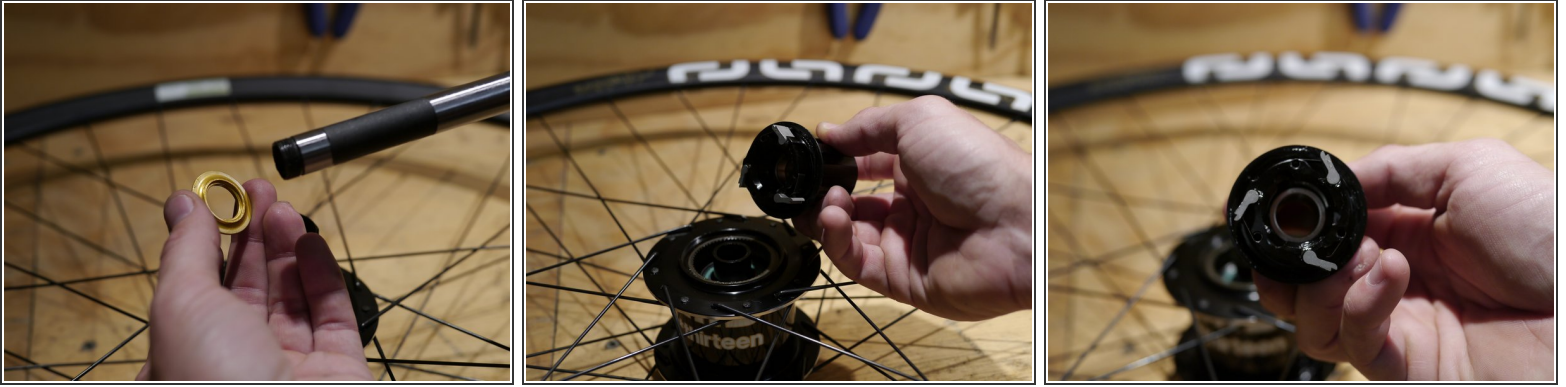
Step 4



- Slide the steel axle out of the drive side of the hub

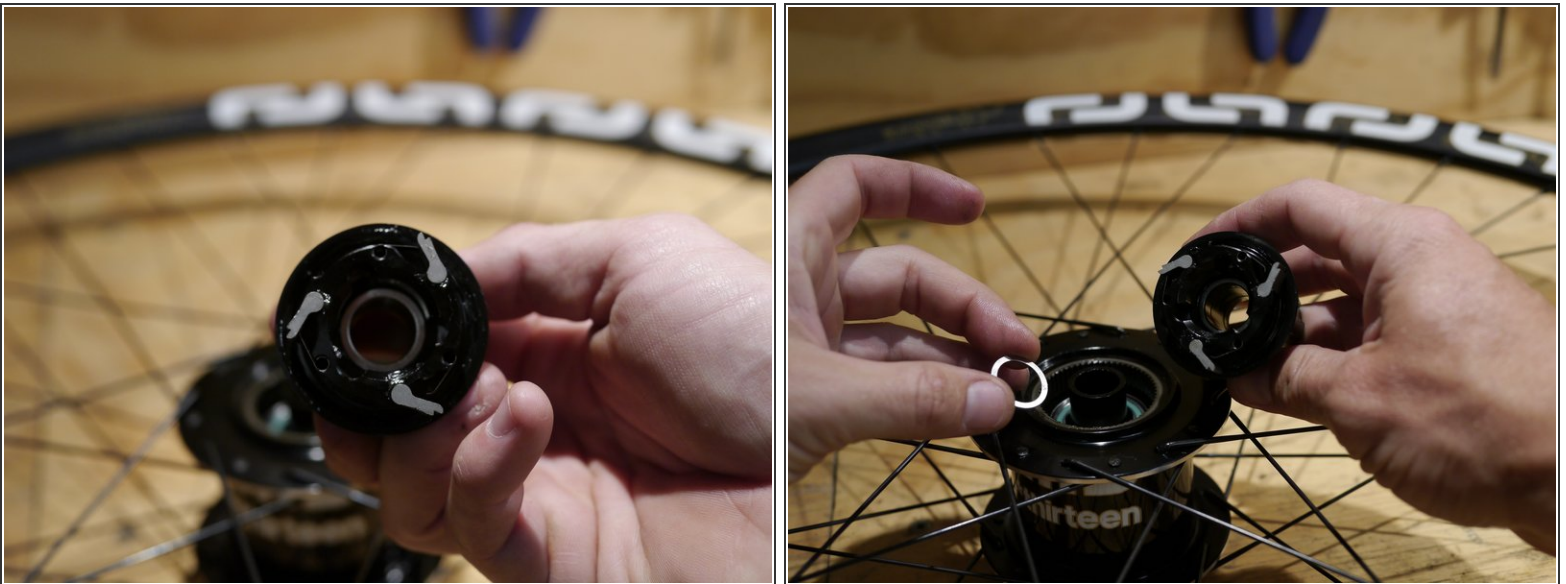
 Be careful not to dislodge the freehub body

Step 5



- Remove the freehub spacer.
 - ⓘ Note: this spacer is not used with the XX1 freehub body
 - ⓘ Note: This spacer may be black or gold in color
- Remove the freehub body
 - ⚠ Be careful not to lose any of the pawls or the pawl springs

Step 6



- Remove the freehub shim
 - This is a thin washer. Be careful as sometimes this can stick to the inside of the freehub body or the bearing spacer

Step 7



- At this point the hub is most of the way apart, you can [service bearings](#), replace worn parts or [just clean things up](#)

Step 8



- Next, slide the freehub spacer onto the axle.
 - Install the spacer so the flat side is against the bearing and the tapered side is facing out from the hub

⚠ Note: This spacer is not used with the XX1 compatible XD driver

- Install the freehub body into the axle

Step 9



- Slide the freehub shim onto the axle after the freehub body
- You should now have the axle, freehub spacer (not used with the XD driver), freehub body and freehub shim installed on the axle.

Step 10



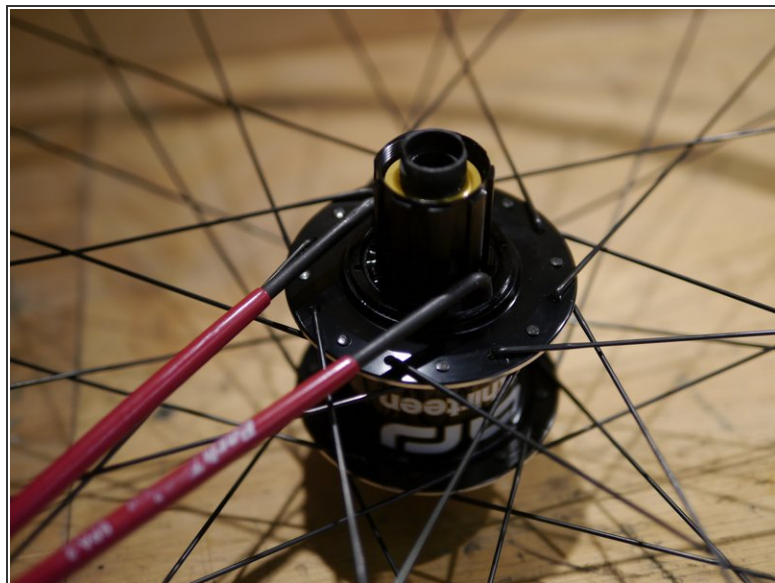
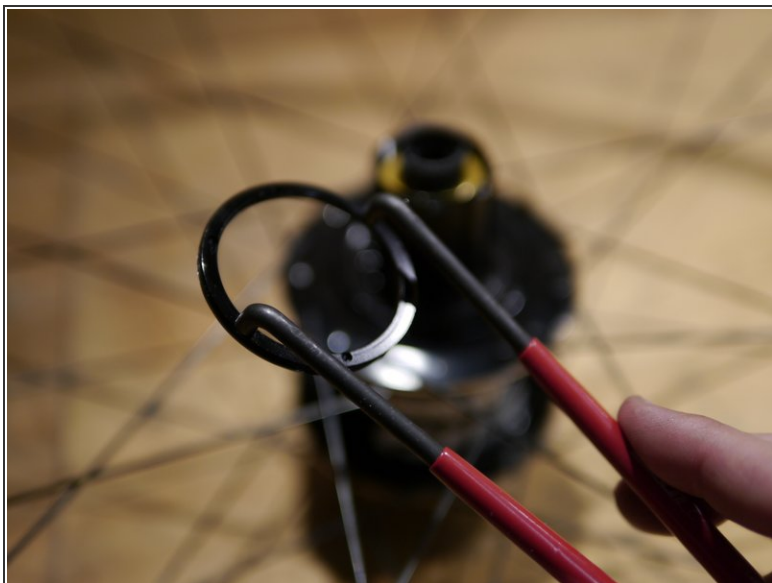
- Slide the axle assembly into the freehub spacer and hub shell
- Turn the freehub body counter-clockwise to compress the pawls into the ratchet ring in the hub shell
- For information on lube and service for the freehub body please see our [freehub service instructions](#)

Step 11



- flip the hub over and install the non-drive endcap
 - ⓘ Remember, this endcap uses a reverse thread so turn it counter-clockwise to tighten
- Turn the endcap by hand to adjust bearing preload until the hub no longer has bearing play
 - Cone wrenches can be used, but are rarely needed
- Tighten the non-drive endcap using a 3mm hex wrench to 3nm

Step 12



- Put one drop of freehub oil on the rubber dust seal and install the freehub dust seal lockring

Thanks for reading, now get out there and ride!