



# How to change front hub bearings - XCX, TRS, LG1

How to change bearings in front hub. All XCX, TRS, and LG1 hubs follow the same process.

Written By: Cory Sullivan





## TOOLS:

- [e\\*thirteen bearing press tool](#) (1)
-

## Step 1 — How to replace front hub bearings for XCX, TRS, and LG1

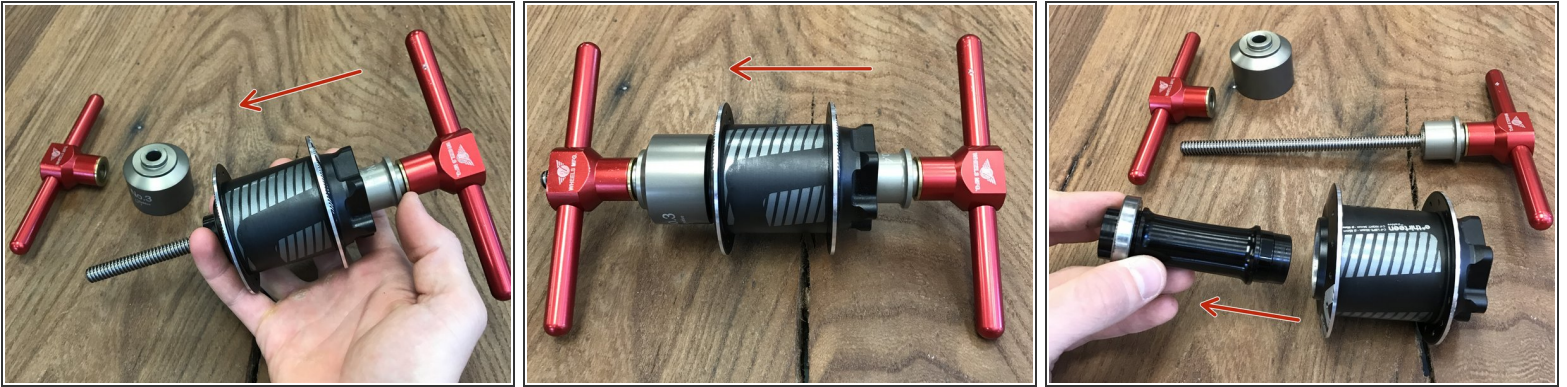


**⚠ Any brand bearing press will work as long as the correct size bearing drifts are used. DO NOT HAMMER OUT BEARINGS - This can lead to a debonded hub shell.**

- First start by removing the hub end caps. Pull firmly to remove.



## Step 2



- Using your bearing press, place the axle press tool on the disc side axle sleeve, this will press the axle through the hub
- Place the bearing removal cup on the non-disc side, this cup should be larger in diameter than the bearing
- Slide the threaded rod through the hub, install the handles
- Make sure the axle press tool and bearing removal cup are centered
- Tighten the tool handles to press the axle and the non-disc side bearing out of the hub shell

### Step 3



- Remove bearing from axle sleeve
- Insert the axle sleeve back into the hub to press out bearing on disc side
- Insert threaded rod through bearing press and axle sleeve
- Place the bearing removal cup on the disc side, this cup should be larger in diameter than the bearing
- Tighten the tool handles to press the axle and the disc side bearing out of the hub shell

## Step 4



- Slide the remaining bearing onto the axle sleeve
- Insert the axle sleeve into the non-disc side of the hub shell
- Put the handle back on the rod and tighten the tool to press the non-drive side bearing in, capturing the axle between the bearings
- Re-install axle end caps

Thanks for reading, now get out there and ride!