



## TRS+ rear hub XD driver install

How to install the XX1 compatible driver in TRS+ rear hubs.

Written By: Dozuki System





## TOOLS:

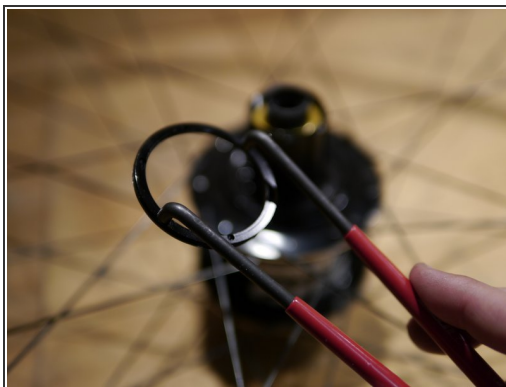
- [3mm hex wrench](#) (1)
- [Pin spanner](#) (1)



## PARTS:

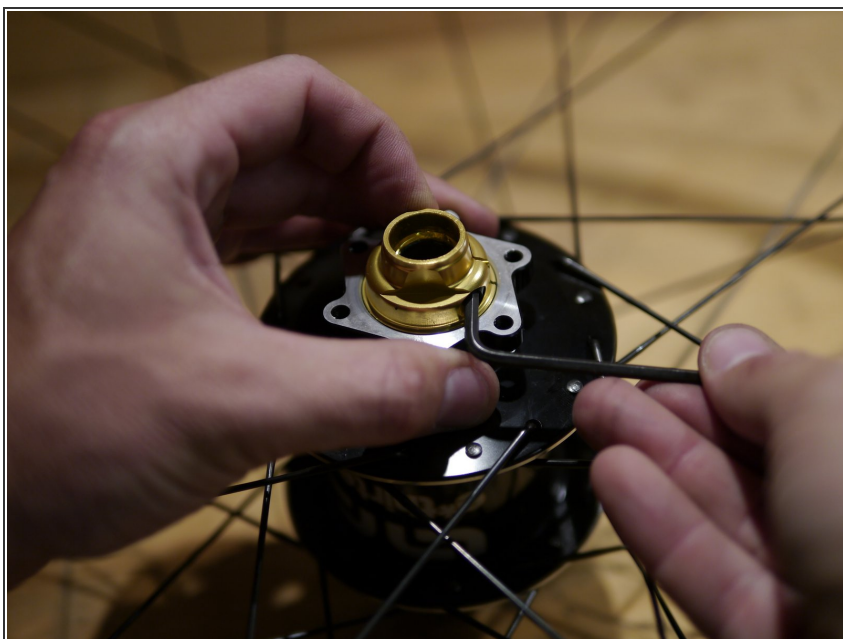
- [grease](#) (1)
- [Dumond Tech freehub oil](#) (1)

## Step 1 — TRS+ rear hub XD driver install



- Before we start, please note that your hub must use the generation two axle to support the XD freehub driver. For more information, please see the related technical service bulletin on our [website](#)
- Let's start by removing the 10sp freehub body
- Remove the Freehub lockring if your hub uses one
- 2016+ hubs and freehubs use a one piece seal and no lockring, so skip this step if you don't see the lockring

## Step 2



- Loosen the 3mm hex endcap screw, by turning counterclockwise

### Step 3



- Loosen the non-drive side endcap by turning it clockwise.
- Remove the non-drive endcap

### Step 4

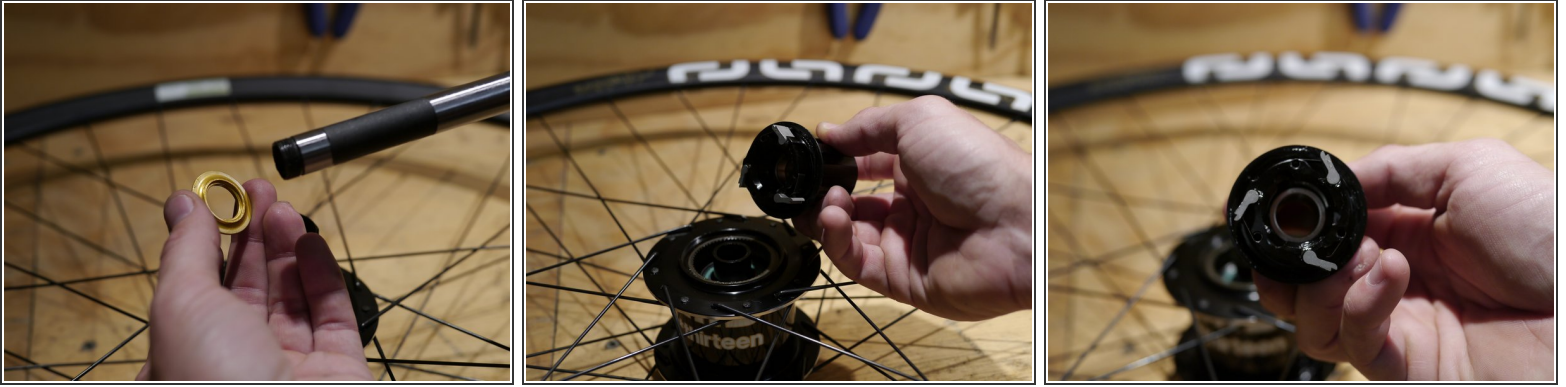


- Slide the steel axle out of the drive side of the hub

 Be careful not to dislodge the freehub body

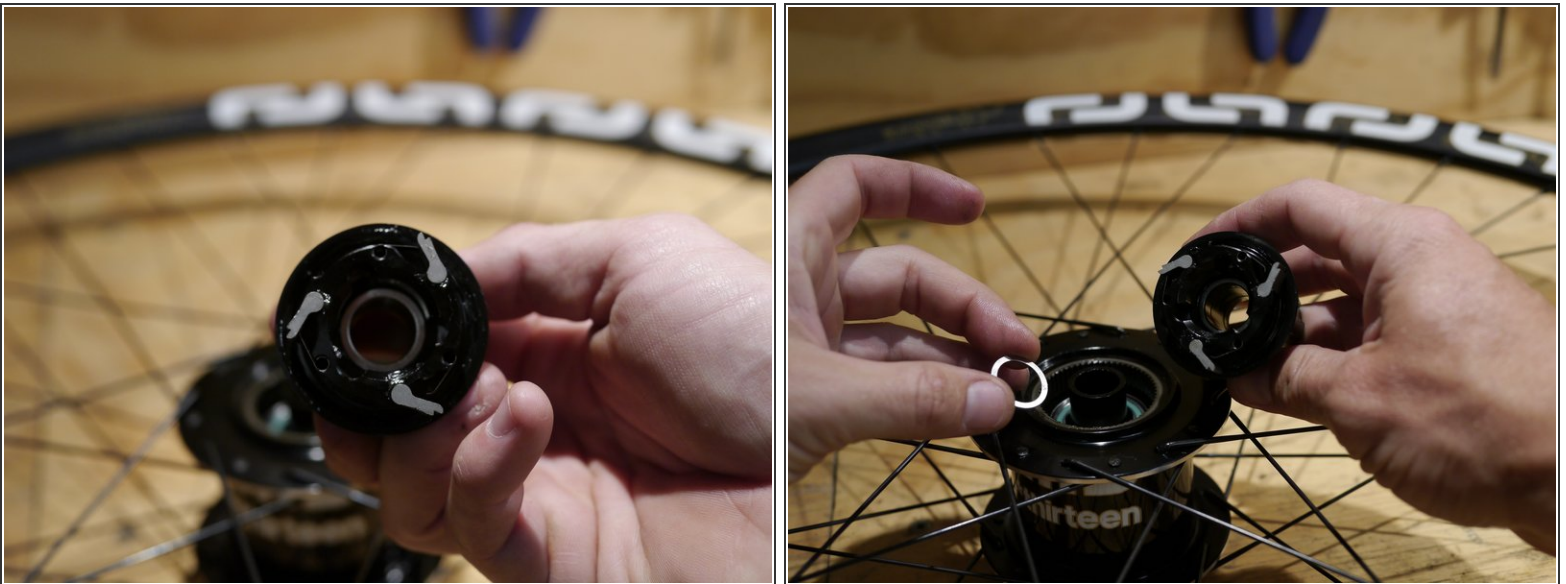


## Step 5



- Remove the freehub spacer.
  - ⓘ Note: this spacer is not used with the XX1 freehub body
- Remove the freehub body
  - ⚠ Be careful not to lose any of the pawls or the pawl springs

## Step 6



- Remove the freehub shim
  - This is a thin washer. Be careful as sometimes this can stick to the inside of the freehub body or the bearing spacer

## Step 7



- Next, slide the XD freehub onto the axle.

**⚠ Note:** Do not use the endcap that comes with the 10sp freehub between the end of the axle and the freehub body, the XD driver uses a thinner cap

## Step 8



- Slide the freehub shim onto the axle after the freehub body
- You should now have the axle, freehub body and freehub shim installed on the axle.

## Step 9



- Slide the axle assembly into the freehub spacer and hub shell
- Turn the freehub body counter-clockwise to compress the pawls into the ratchet ring in the hub shell
- For information on lube and service for the freehub body please see our [freehub service instructions](#)



## Step 10



- flip the hub over and install the non-drive endcap
  - ⓘ Remember, this endcap uses a reverse thread so turn it counter-clockwise to tighten
- Turn the endcap by hand to adjust bearing preload until the hub no longer has bearing play
  - Cone wrenches can be used, but are rarely needed
- Tighten the non-drive endcap using a 3mm hex wrench to 3nm



## Step 11



- Install the freehub dust seal lockring (if used)

Thanks for reading, now get out there and ride!