



Generation 2 axle - XCX+ rear hub axle install and removal

How to remove and install XCX+ rear hub axles

Written By: Dozuki System



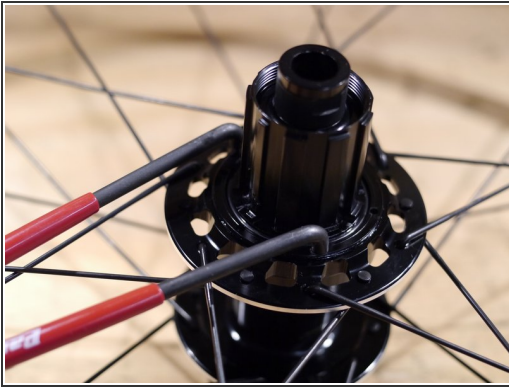
**TOOLS:**

- [3mm hex wrench](#) (1)
- [Pin spanner](#) (1)

**PARTS:**

- [grease](#) (1)
- [Dumond Tech freehub oil](#) (1)

Step 1 — Generation 2 axle - XCX+ rear hub axle install and removal



- Remove the Freehub lockring
- 2016+ hubs and freehubs use a one piece seal and no lockring, so skip this step if you don't see the lockring

Step 2



- Loosen the 3mm hex endcap screw, by turning counterclockwise

Step 3



- Loosen the non-drive side endcap by turning it clockwise.
- Remove the non-drive endcap

Step 4



- Slide the steel axle out of the drive side of the hub

 Be careful not to dislodge the freehub body

Step 5



- Remove the freehub spacer.
 - ⓘ Note: this spacer is not used with the XX1 freehub body
- Remove the freehub body
 - ⚠ Be careful not to lose any of the pawls or the pawl springs

Step 6



- Remove the freehub shim
 - This is a thin washer. Be careful as sometimes this can stick to the inside of the freehub body or the bearing spacer

Step 7



- Remove the bearing spacer
- At this point the hub is most of the way apart, you can service bearings, replace worn parts or [just clean things up](#)

Step 8



- Now lets put the hub back together
- Start by lightly greasing and setting the bearing spacer onto the driveside hub bearing

Step 9



- Next, slide the freehub spacer onto the axle.
- Install the spacer so the flat side is against the bearing and the tapered side is facing out from the hub

 **Note:** This spacer is not used with the XX1 compatible XD driver

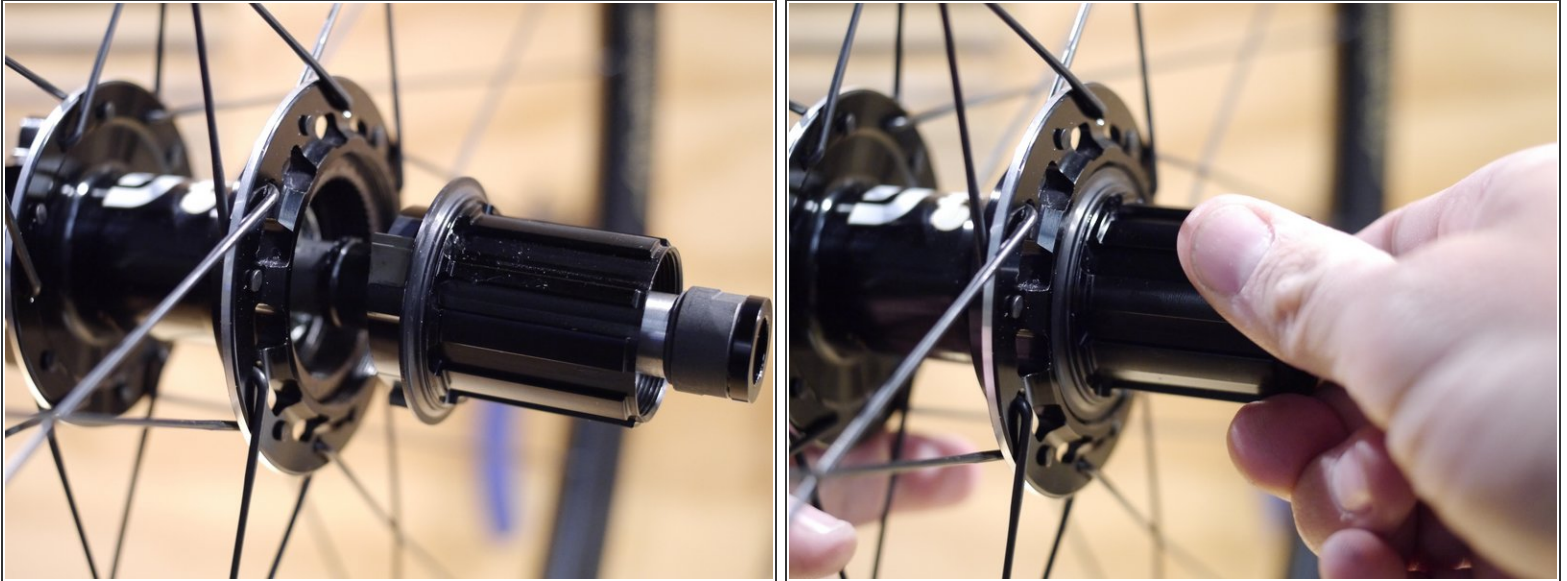
- Install the freehub body into the axle

Step 10



- Slide the freehub shim onto the axle after the freehub body
- You should now have the axle, freehub spacer (not used with the XD driver), freehub body and freehub shim installed on the axle.

Step 11



- Slide the axle assembly into the freehub spacer and hub shell
- Turn the freehub body counter-clockwise to compress the pawls into the ratchet ring in the hub shell
- For information on lube and service for the freehub body please see our [freehub service instructions](#)

Step 12



- flip the hub over and install the non-drive endcap
 - ⓘ Remember, this endcap uses a reverse thread so turn it counter-clockwise to tighten
- Turn the endcap by hand to adjust bearing preload until the hub no longer has bearing play
 - Cone wrenches can be used, but are rarely needed
- Tighten the non-drive endcap using a 3mm hex wrench to 3nm

Step 13



- Put one drop of freehub oil on the rubber dust seal and install the freehub dust seal lockring

Thanks for reading, now get out there and ride!